


CHILD ABUSE



By
SANDHYA PAINULY
MPH - 2nd year




80% of children
that **die** from abuse
are **under** the age of **4**

Give a child a voice.
Be that voice.



Prevent Child Abuse
America
www.preventchildabuse.org



Introduction

- **Child abuse constitutes a violation of the most basic rights of children and adolescents, which are enshrined in the Universal Declaration of Human Rights.**

INTRODUCTION

- Few social problem have as profound an impact on the wellbeing of children as child abuse and neglect. Parental surveys indicate that several million adults admit to physical violence against their children each year and many more adults report abusive experience as children.
- Child abuse is parental behavior destructive to the normal physical or emotional development of a child. Child abuse is not limited to one age group can be detected at any age.
- The age group of children from birth to 3 years expect that highest number of victim of child abuse, with girls being abused more frequently than boys.

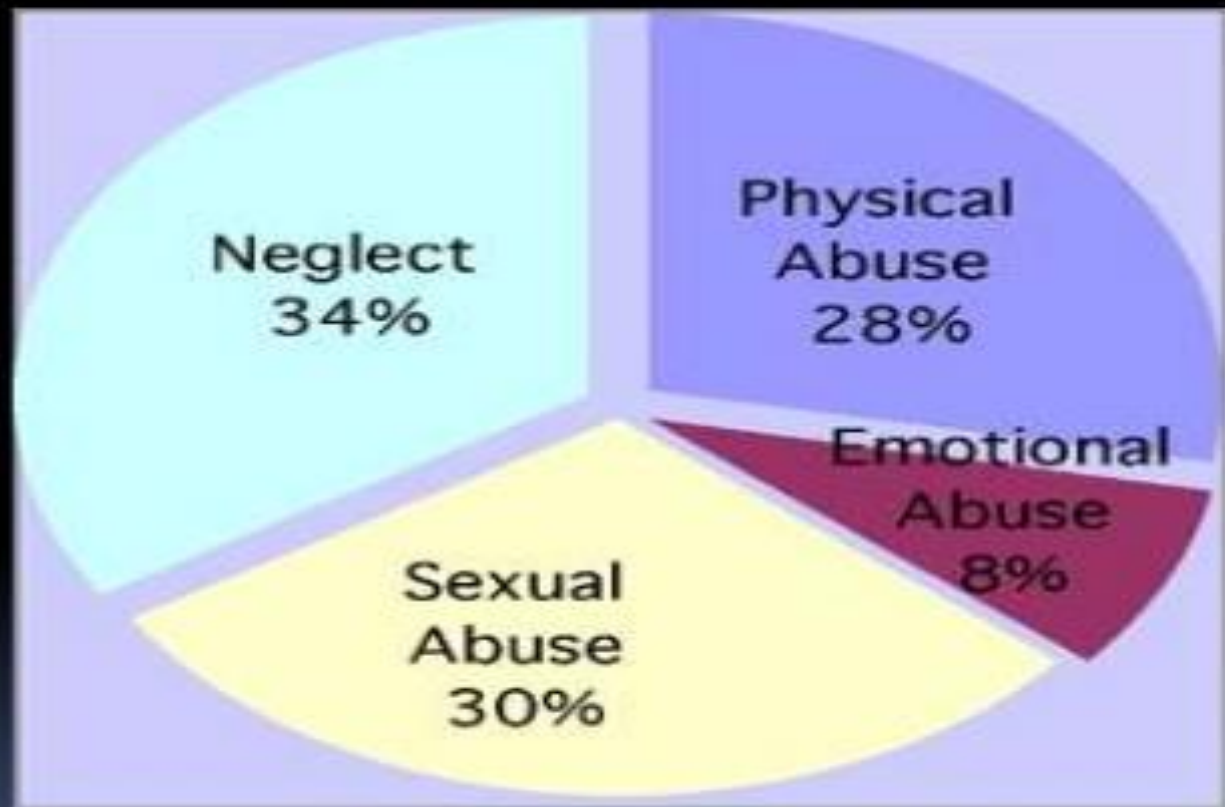
- Abuse in the family can take various forms. Parent and caregiver can abuse child, spouses or other family member. Child abuse can have a significant negative impact on the child growth and development and physical and emotional health.
- In some cases, domestic violence or parental substance abuse may lead to child abuse. Abusive parents can be found at all socioeconomic levels, but families with greater financial means may be able to evade detection more easily.
- Low income families show greater evidence of violence, neglect, and several abuse according to some studies.

Definition:

All forms of physical, emotional, sexual injury to a child or failure to prevent such injury to a child (neglect).

Types:

- 1-Physical
- 2-Emotional
- 3-Sexual
- 4-Neglect



Three major components of child abuse

Child

+

Care Giver

+

Stress

=

Child Abuse

Child Abuse

TYPES

PHYSICAL ABUSE –

- Physical abuse may occur when the care giver is unfamiliar with normal child behavior and caregiver become frustrated when child does not behave as they expect.
- These are the acts of commission by a care giver that cause actual physical harm or have the potential for harm. When the child resists the care giver control or seems to do the opposite of what is expected the care giver may take it as a personal often and become angry, possibly responding with physical punishment

- Physical punishment leave marks, causes injury or threatened the Childs physical and emotional well being.
- Various physical punishments are
 - Burn (most common)
 - Cigarette burns
 - Immersion of hand in hot liquid
 - Slapping
 - Beating with stick or belt.



Physical abuse or battered child syndrome



Wait.....

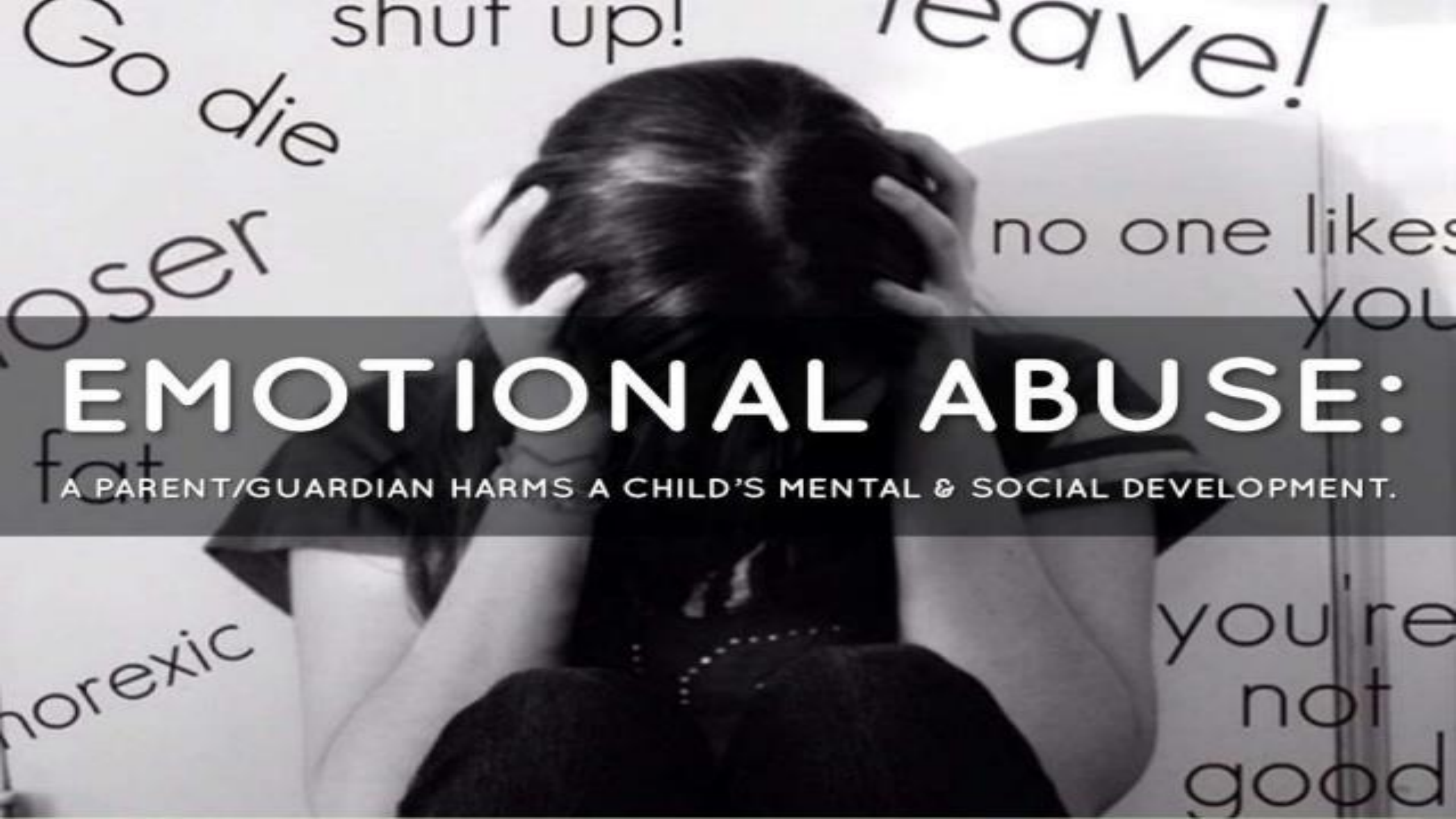


Child Abuse



Physical Abuse...

The deliberate infliction of injuries on a child, usually by the child's caregiver is termed physical abuse. Minor physical injury is responsible for more reported cases of a treatment than major.



EMOTIONAL ABUSE:

A PARENT/GUARDIAN HARMS A CHILD'S MENTAL & SOCIAL DEVELOPMENT.



Emotional Abuse...

When someone hurts you in other ways than touching you like yelling constantly, threatening to hurt or leave you or calling names etc.


EMOTIONAL ABUSE

- Failure of the care giver to provide an appropriate and supportive environment including the acts that adversely effect the emotional health and development of child.
- Verbal abuse are difficult to identify but had a serious and lasting effect than physical abuse





Child Abuse



**1 in 5 girls and
1 in 20 boys is a
victim of child
sexual abuse**

The U.S. Department of Health and
Human Services. Children's Bureau

STOP
**Child
Sexual
Abuse**

- The child may exhibit various physical complaint like various ache and pain, gastrointestinal upset, changes in bowel and bladder habits, nightmare and acts of aggression and hostility.
- In most of the cases the diagnosis is made by the history of the child.

Before they turn 18...

1 in 6 boys experience
some form of sexual abuse



1 in 4 girls experience
some form of sexual abuse



Kinds of Child Abuse



Neglect

Definition:

-failure to provide sufficient food, clothing, shelter, medical care, education to the child.

Physical indicator:

- constant hunger
- poor hygiene
- inappropriate clothing

Behavioral indicators:

- begging or stealing food
- frequent sleepiness.



Child Abuse

Shaken baby syndrome (SBS)

Can be a fatal form of child abuse . Characterized by intracranial hemorrhage ,retinal hemorrhage and loss of consciousness due to vigorous shaking of the infant .

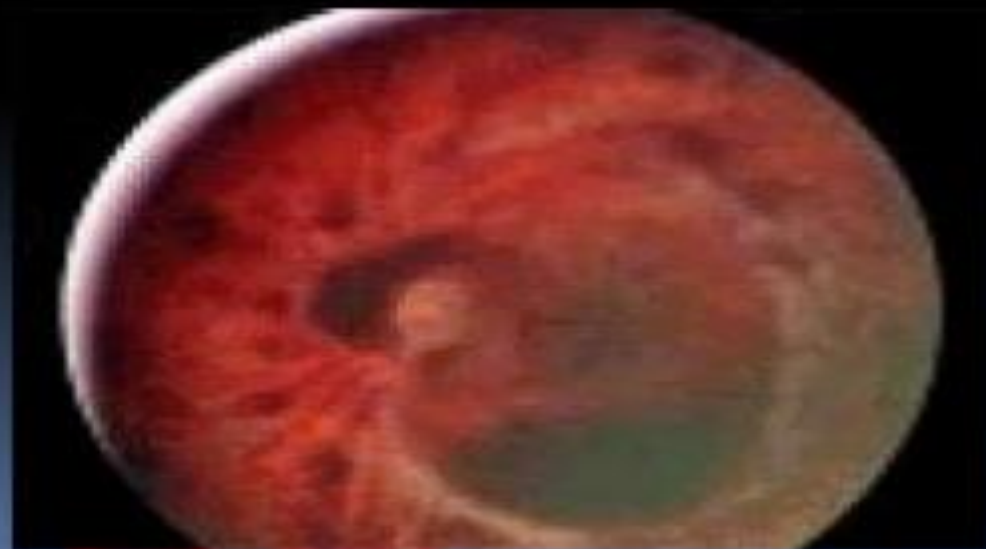
Facts about SBS:

- shaking is more likely to be done by a male, fathers make up 76% of all shakers .
- If the shaker is female it's more likely to be the babysitter.
- About 70 % of the victims are killed , other 30 % live with severe permanent injuries.
- One in four babies die as a result of SBS.

DO THIS

AND

YOU SEE THIS



Never Never shake a baby



Crying can't kill a baby but shaking can

Child Abuse

Battered child Syndrome



Child Abuse

Definition

Clinical condition characterized by repeated intentional acts of trauma to a young child . Deprivation of food and water is a variant of this trauma . Also called child abuse syndrome or non-accidental injury.

Spectrum of injury:

- Soft tissue injury.
- Thermal injury.
- Skeletal injury.
- Internal injuries (brain, abdomen, or eye).



Suggestive Behaviors



- Self-stimulatory behavior such as biting, rocking.
- During infancy, lack of social smile and stranger anxiety.
- Withdrawal
- Unusual fearfulness
- Antisocial behavior, such as destructiveness, stealing, cruelty
- Lags in emotional and intellectual development, especially Language
- Suicide attempts.

MANIFESTATION

PHYSICAL ABUSE

- Fracture
- Redness of abused area
- Burn marks
- Scars
- Head injury or injury to internal organ



SEXUAL ABUSE

- Infection
- Genital injury
- Abdominal injury or pain
- Constipation
- Chronic or recurrent urinary infection
- Behavior problem



EMOTIONAL ABUSE

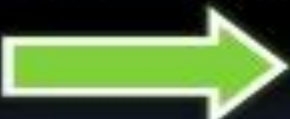
- Depressed
- Anxiety
- Afraid



Symptoms to look for...



Consequences of child abuse

- Death or disability in severe cases.
- Affective and behavior disorders.
- Developmental delay and learning difficulties.
- Failure to thrive and growth retardation.
- Predisposition to adult psychiatric disorders.
- An increased risk of the abused becoming an abuser  **Abuse Cycle**

Bruises heal but pain lasts forever

Child Abuse

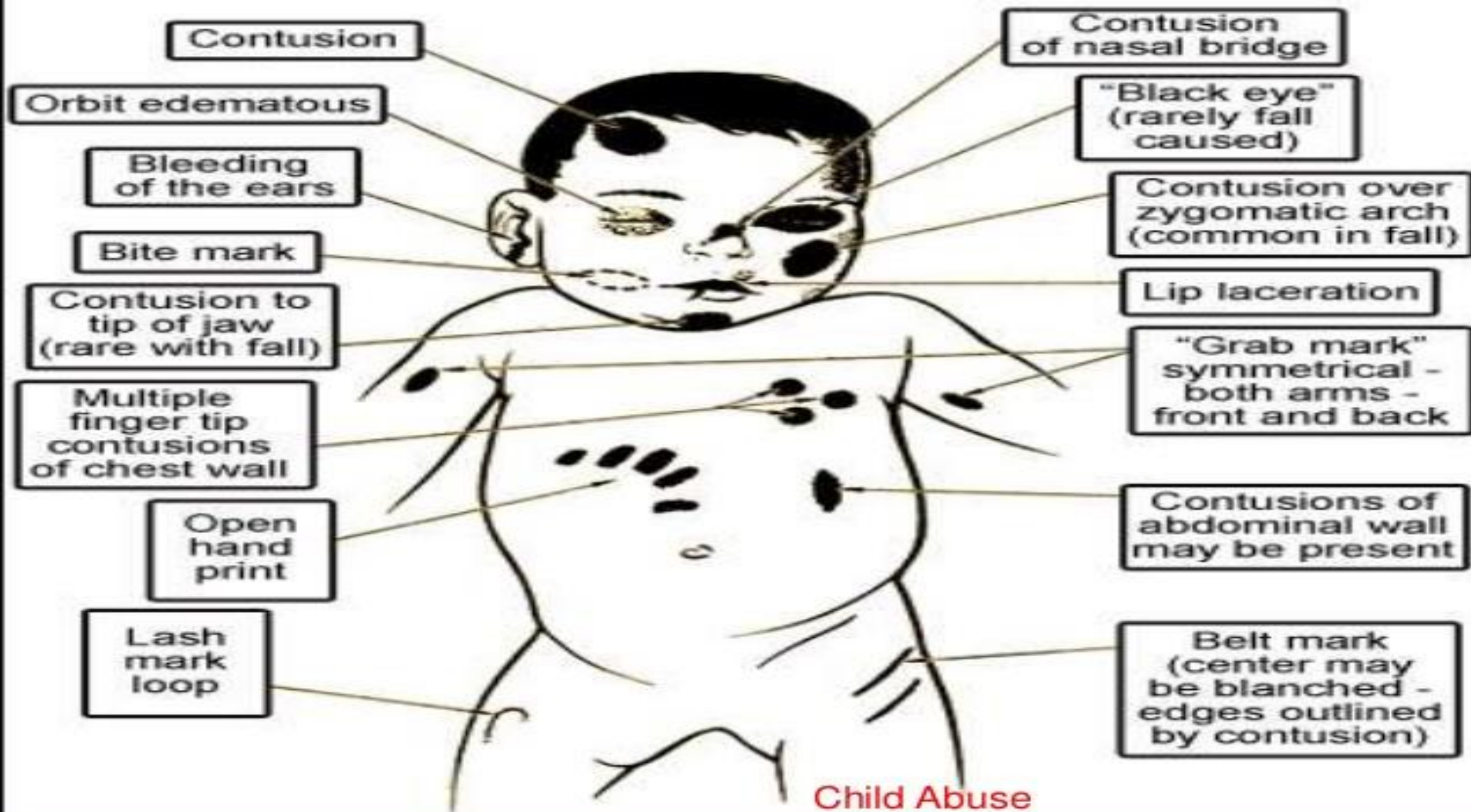
Diagnosis

1-Age of the child: Infants can be of any age, but the majority are under 2 years. It's more likely to be male than female, unwanted or illegitimate child.

2-Social class: Any social class can be involved, but the lower middle classes are the most at risk.

3-Clinical findings: more common in the skin and the skeleton, Either:

- evidence of injury as old or recent bruises, fractures, burns, scalds, bites, kicking, slapping..
- Or evidence of neglect i.e. the child may be starved and dehydrated.



slapping



Child Abuse

Others



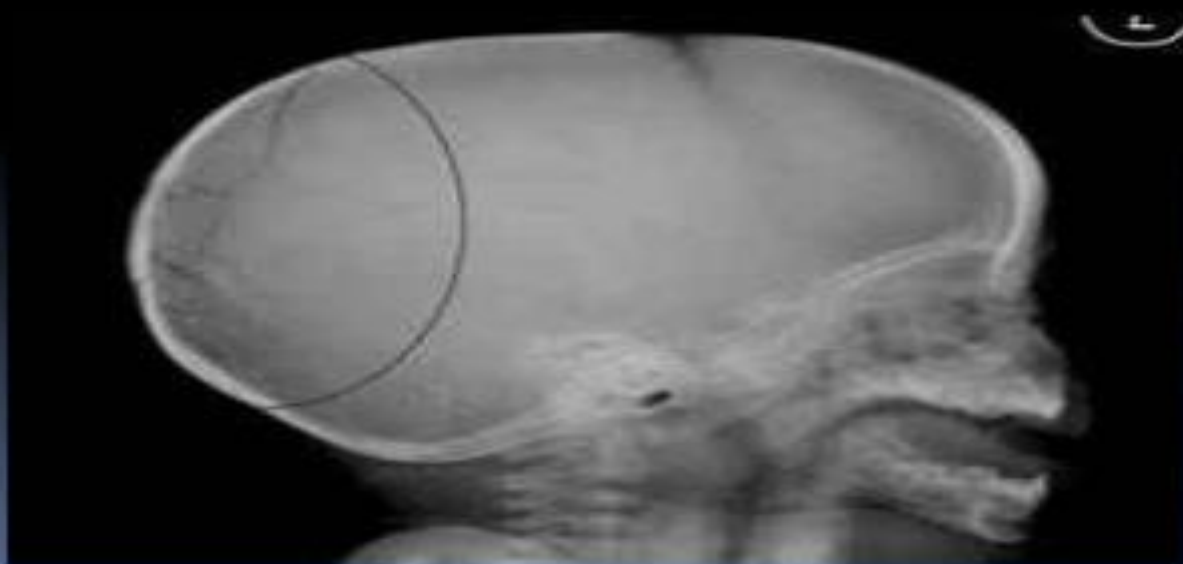
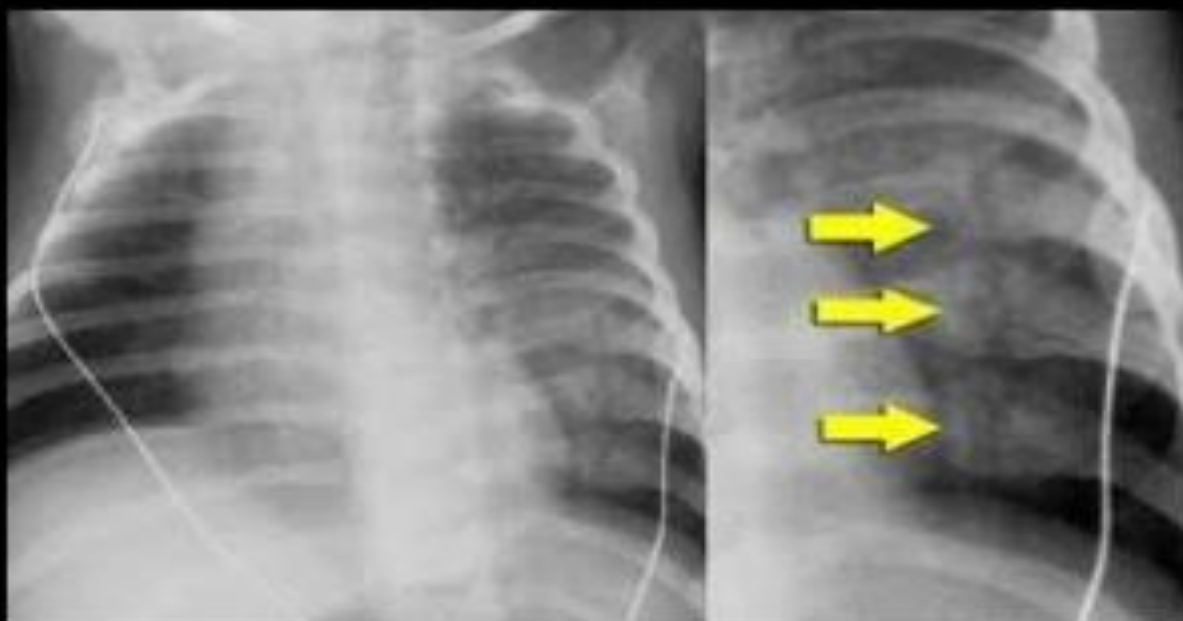
Radiological evidence

The most frequent sites of skeletal injury are

- the extremities 77 %
- the skull 34 %
- the rib cage 19 %

Epiphyseal-metaphyseal fractures of long bones of the arms and legs and the rib fractures exclusive for the new born period are considered specific for the child abuse.

Multiple repetitive fractures of other areas are only suggestive of child abuse, but are not specific.



Child Abuse

Causes of death

- 1-Head injuries: the most frequent cause of death , commonly subdural and subarachnoid hemorrhages.
- 2-Injuries of the abdomen:
 - intestine: rupture
 - mesentery: tears
 - spleen: rupture
 - liver: laceration
- 3-Burns or scalds: cause shock, dehydration and Infection.

Autopsy findings

- 1-Multiple bruises of various ages over the body
- 2-Cigarette burns on the body.
- 3-Multiple fractures by X-ray.
- 4-Injuries to the head, in the first year of life.
- 5-Abdominal injuries.



Major Findings of Ministry of Children and Women

Major Findings of MCW...



- Physical Abuse:

Two out of every three children -physically abused.

1. **Out of 69% children physically abused - 54.68% were boys.**
2. **Over 50% children - subjected to one or the other form of physical abuse.**
3. **Out of those children physically abused in family situations, 88.6% - abused by parents.**

Contd...



4. **65%** of school going children reported facing **corporal punishment** i.e. two out of three children were victims of corporal punishment.
5. **62%** of the corporal punishment -**government and municipal school**.
7. The State of **Andhra Pradesh, Assam, Bihar and Delhi** have almost consistently reported higher rates of abuse in all forms as compared to other states.
8. Most children did not report the matter to anyone and **50.2%** children worked seven days a week.

Contd...



- **Sexual Abuse:**

1. **53.22%** children reported having faced one or **more forms** of sexual abuse.
2. **21.90%** child respondents reported **facing severe forms** of sexual abuse and **50.76%** other forms of sexual abuse.
3. Out of the child respondents, **5.69%** **reported** being sexually assaulted.

Contd...



4. **Children in Assam, Andhra Pradesh, Bihar and Delhi** reported the highest incidence of sexual assault.
5. **Children on street**, children at work and children in institutional care reported the highest incidence of sexual assault.
6. **50%** abuses are persons known to the child or in a position of trust and responsibility.

Contd...



- **Emotional Abuse and Girl Child Neglect:**

1. **Every second child** reported facing emotional abuse.
2. Equal percentage of **both girls and boys** reported facing emotional abuse.
3. In **83%** of the cases parents were the abusers.
4. **48.4%** of girls wished they were boys.

It Should Not Hurt To Be A Child

TR





A Ray of Hope:



The POCSO Act, 2012

The POCSO Act 2012...

- The **Protection of Children from Sexual Offences Act (POCSO Act) 2012** was formulated in order to effectively address sexual abuse and sexual exploitation of children.
- The Act received the President's assent on **19th June 2012** and was notified in the Gazette of India on **20th June, 2012**.

Contd...

- The Act defines a child as any person below **eighteen years of age**.
- It defines different forms of sexual abuse, including **penetrative and non-penetrative assault**, as well as sexual harassment and pornography.
- It deems a **sexual assault** to be “**aggravated**” under certain circumstances, such as when the abused child is mentally ill.
- The Act also casts the **police** in the role of **child protectors** during the investigative process.

POCSO: How far Successful

- The Act of 2012 has given more teeth to fighting child rights violation.
- The number of cases registered for child abuse raised from **8,904 in the year 2014 to 14,913 in the year 2015**, under the POSCO Act.

A large blue ribbon symbol, commonly used for awareness campaigns, is centered in the background. It forms a loop at the top and has two long tails that cross each other in the middle and point downwards.

April is
Child Abuse
Prevention
Month

PREVENTION

- Prevention child abuse should be a part of national agenda. In India abuse of children is a major social and public health problem especially socially marginalized and economical backward groups such as children in urban slums and children on street and children of construction worker.
- Health Education of children
- Timely health care and routine examination
- Healthy nutrition
- Sanitation facilities

A red, rectangular stamp with a distressed, ink-like texture. The words "STOP CHILD ABUSE" are written in bold, uppercase letters, oriented vertically from bottom to top. The stamp has a double border and is slightly tilted to the right.

STOP CHILD ABUSE

TREATMENT

- To provide a safe environment to prevent further harm
- Separating the child, as well as, any other children in the household, from the person suspected of abuse
- Cognitive behavioral therapy was designed for children who have experienced physical abuse.
- Any physical injuries will be treated, either in a hospital or at a doctors office, depending on how serious they are.

Stop
Child Abuse

Thank you



THANK
YOU

A cartoon illustration of a smiling face with a red tongue, positioned between the letters 'Y' and 'O' of the word 'YOU'. The face is round, orange-brown, and has a wide, open-mouthed smile showing a red tongue. Its eyes are closed in a happy expression, and it has a few small black lines for eyebrows and a nose. The face is integrated into the letter 'O' of the word 'YOU'.